

High Profile Corner Location

2091 Harvey Avenue, Kelowna BC

FOR LEASE > .871 Acres

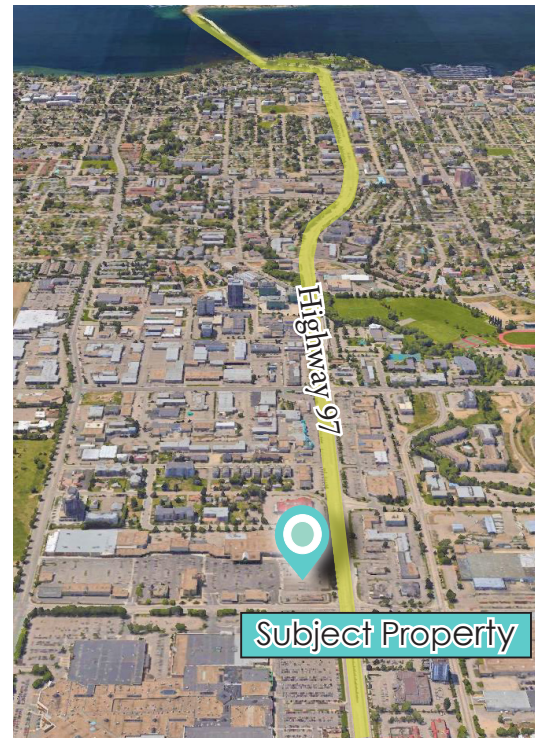


Orchard Plaza

The .87 acre redevelopment site is located on the corner of Highway 97 and Cooper Road. The direct access from the highway allows convenient routes to and from multiple residential neighbourhoods, downtown Kelowna and various vibrant business parks. Situated at a controlled intersection allows vehicles from all directions to access the site. Major neighbouring retailers include Save-On Foods, MEC, WINNERS, Cineplex Cinemas and Orchard Park Mall.

Details

- > Restaurant, Commercial and Office Space Opportunities
- > Site Size .871 acres
- > Highly visible location
- > Build to Suit opportunity
- > 30 meters of Harvey Highway 97/Avenue frontage
- > 71 meters of Cooper Road frontage

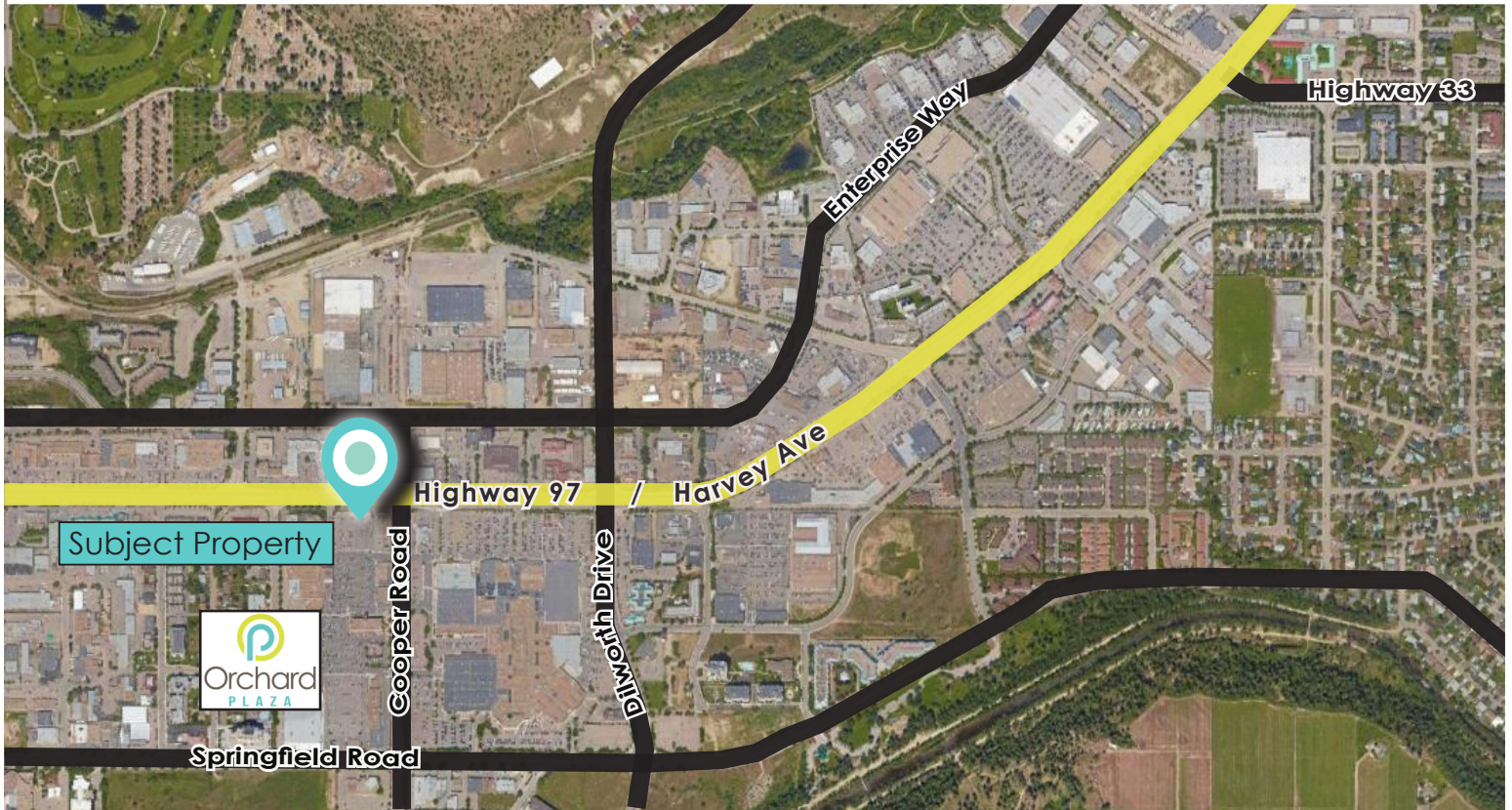


McINTOSH
PROPERTIES

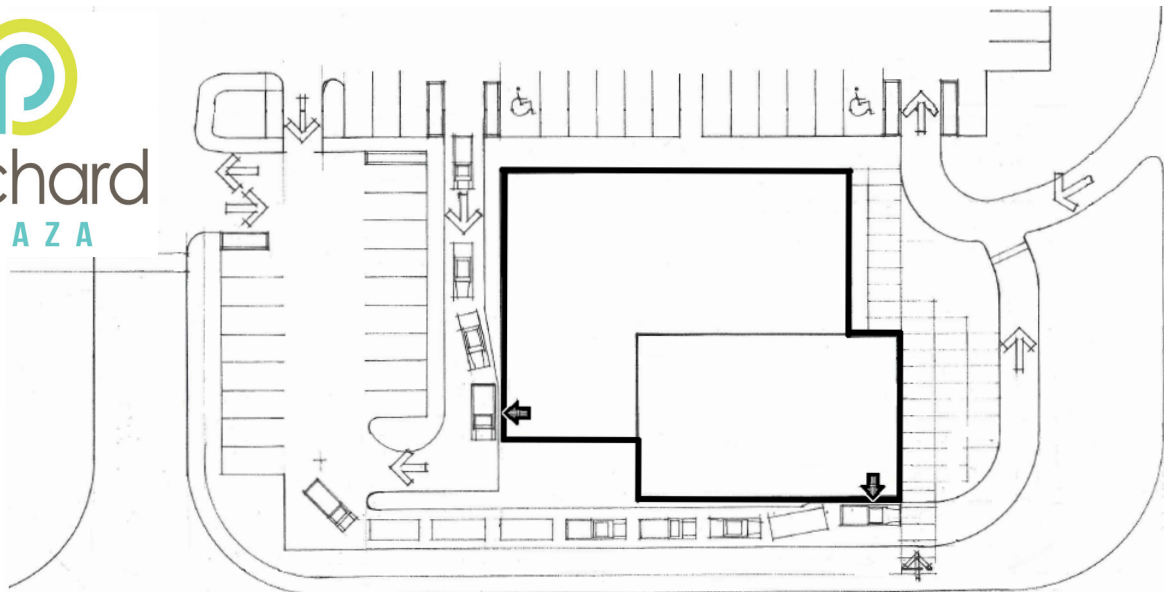
McIntosh Properties
201-1980 Cooper Road
Kelowna, BC
1 250 763 7787
info@mcintoshproperties.ca
www.mcintoshproperties.ca

High Profile Corner Location

FOR LEASE > .871 Acres Kelowna B.C.
Highway 97 & Cooper Rd



Preliminary Site Conceptualization



← Cooper Road →

← Highway 97 / Harvey Ave →