

Office Space

384 Bernard Avenue, Kelowna BC

FOR LEASE > Second Floor 1,500 - 3,500 sf

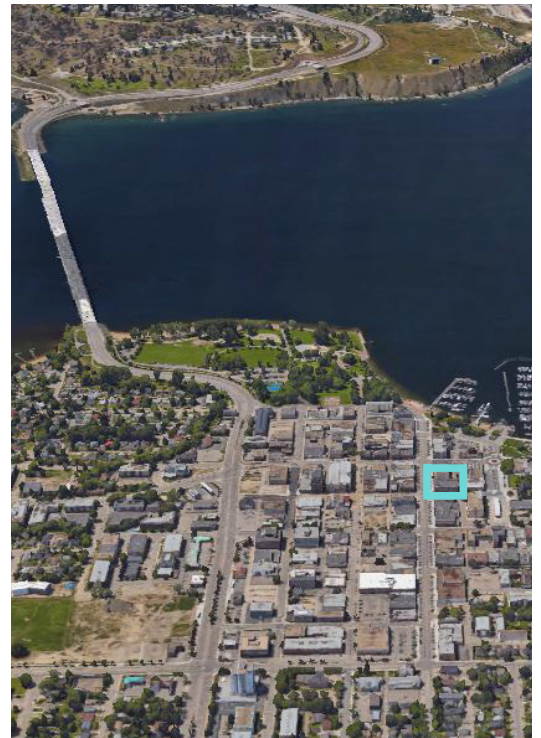


384 Bernard

This updated office building is located in downtown Kelowna, at the intersection of Bernard Ave and Pandosy Street, across from both Starbucks and Lululemon. This location offers wheelchair accessible elevators, easy access, convenient amenities, shopping and public transit. Starting from 1,500 sf, this second floor office space is situated above HSBC in the busy downtown core. Space can be updated to tenant's specifications.

Details

- > Unit: Second Floor
- > Approx Size: + 1,500 sf - 3,500 sf
- > Base Rent (per sf per year): \$14.00
- > Est. Triple Net ((per sf per year): \$5.00
- > Total Rent (Per Month): \$ 19.00
- > Additional Costs: GST & Electricity



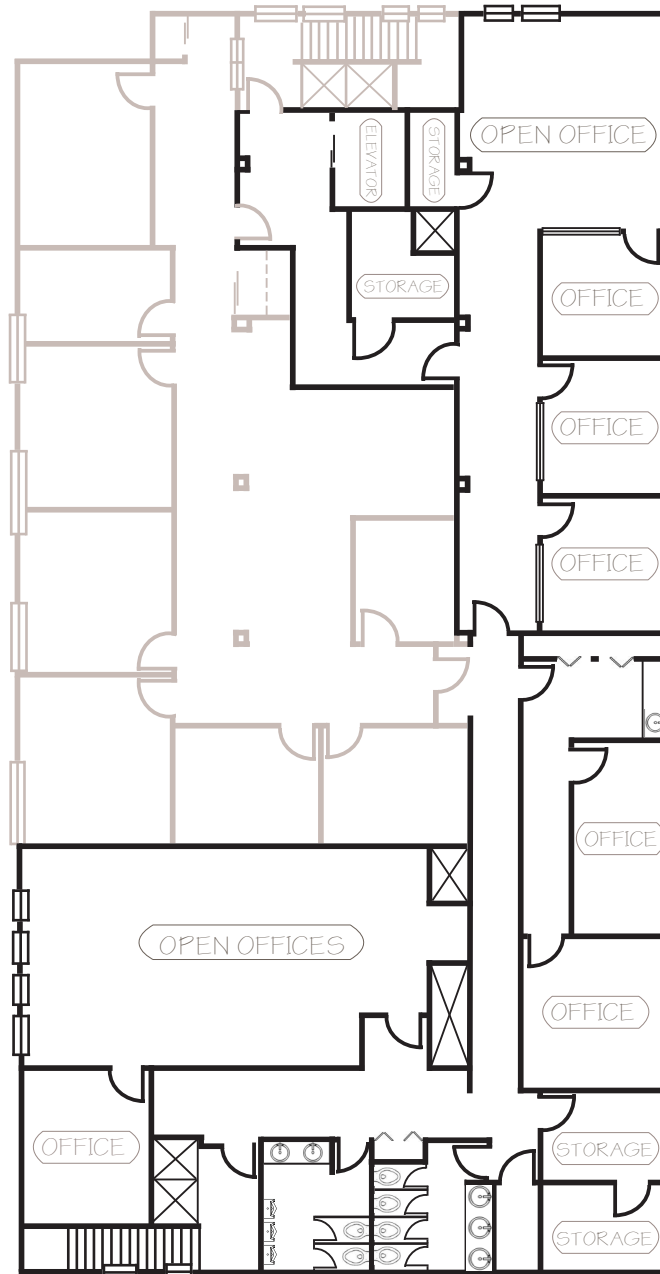
McINTOSH
PROPERTIES

McIntosh Properties
201-1980 Cooper Road
Kelowna, BC
1 250 763 7787
info@mcintoshproperties.ca
www.mcintoshproperties.ca

Office Space

384 Bernard Avenue, Kelowna BC

FOR LEASE > Seconf Floor 1,500 - 3,500 sf



SECOND FLOOR